

6 Knotts Drive, Colne, BB8 8DH

Price £205,000

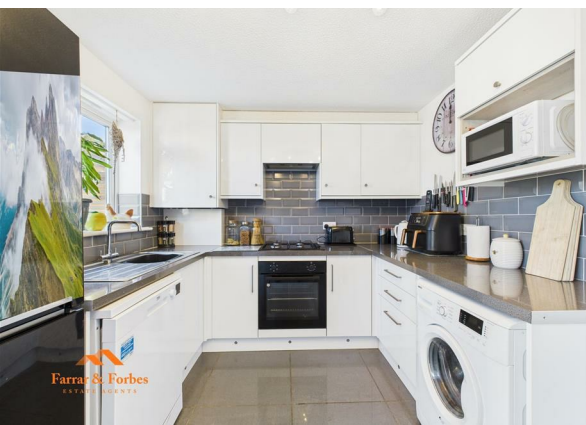
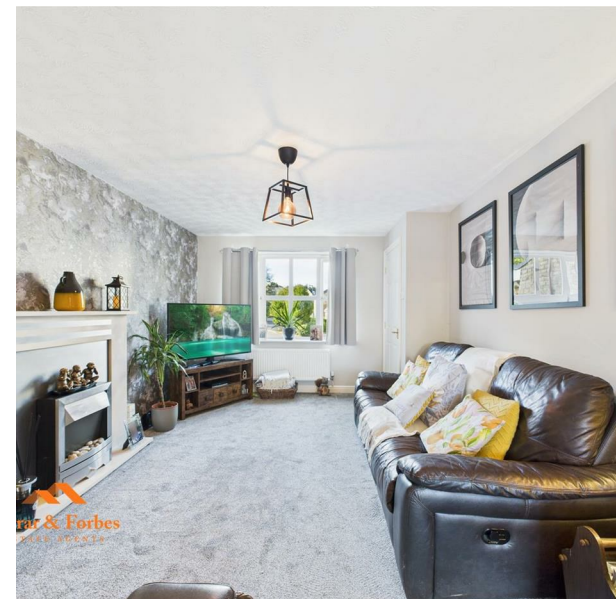
Council Tax Band:



Farrar & Forbes

ESTATE AGENTS

Source | Sell | Rent | Manage



Beautifully maintained and updated, this three-bedroom semi-detached home is set within a quiet, family-friendly estate —ideal for first-time buyers or growing families alike.

Tucked away in a peaceful position, the property benefits from a generous driveway with space for multiple vehicles and a garage that has been converted into a utility/storage room (with the option to easily reinstate it as a garage if desired).

On entering, a welcoming vestibule with staircase to the first floor leads into the spacious lounge. This light-filled room features a striking electric fire with wood surround, providing a warm focal point for the space. To the rear, the open-plan kitchen/diner is arranged in a practical horseshoe design, fitted with a range of matching wall, base, and drawer units complemented by contrasting work surfaces. Integrated appliances include a gas hob, electric oven, and extractor hood. Sliding patio doors open directly onto the rear garden, creating seamless indoor-outdoor living.

The garden itself offers a versatile mix of paved patio, low-maintenance astro turf, and a dedicated seating area at the far end.

Upstairs, the accommodation comprises two generously sized single bedrooms and a large double master bedroom, which includes a built-in storage cupboard currently used as a wardrobe. The family bathroom is fitted with a modern three-piece suite: low-level WC, pedestal hand wash basin, and a panelled bath with overhead shower and glass screen.

This well-presented home combines space, style, and practicality in an excellent location.





Farrar & Forbes

ESTATE AGENTS

Source | Sell | Rent | Manage

11a Skelton Street
Colne
Lancashire
BB8 9JE
01282 914042
Info@farrarandforbes.co.uk

Energy Efficiency Rating		
	Current	Potential
Very energy efficient - lower running costs		
(92 plus) A		
(81-91) B		
(69-80) C		
(55-68) D		
(39-54) E		
(21-38) F		
(1-20) G		
Not energy efficient - higher running costs		
England & Wales		EU Directive 2002/91/EC 